

HEALTH PARK AT AVENIR

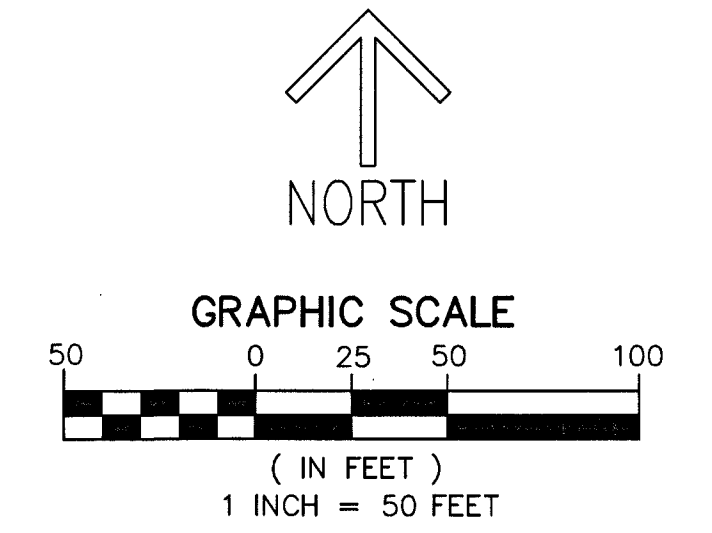
BEING A REPLAT OF TRACT C, AVENIR PARCEL D, AS RECORDED IN PLAT BOOK 137, PAGE 21 OF THE PUBLIC RECORDS OF PALM BEACH COUNTY, FLORIDA, LYING IN SECTION 15, TOWNSHIP 42 SOUTH, RANGE 41 EAST, CITY OF PALM BEACH GARDENS, PALM BEACH COUNTY, FLORIDA

THIS INSTRUMENT PREPARED BY
RONNIE L. FURNISS
OF
CAULFIELD & WHEELER, INC.
SURVEYORS - ENGINEERS - PLANNERS
7900 GLADES ROAD, SUITE 100
BOCA RATON, FLORIDA 33434 - (561)392-1991
CERTIFICATE OF AUTHORIZATION NO. LB3591
JANUARY 2025

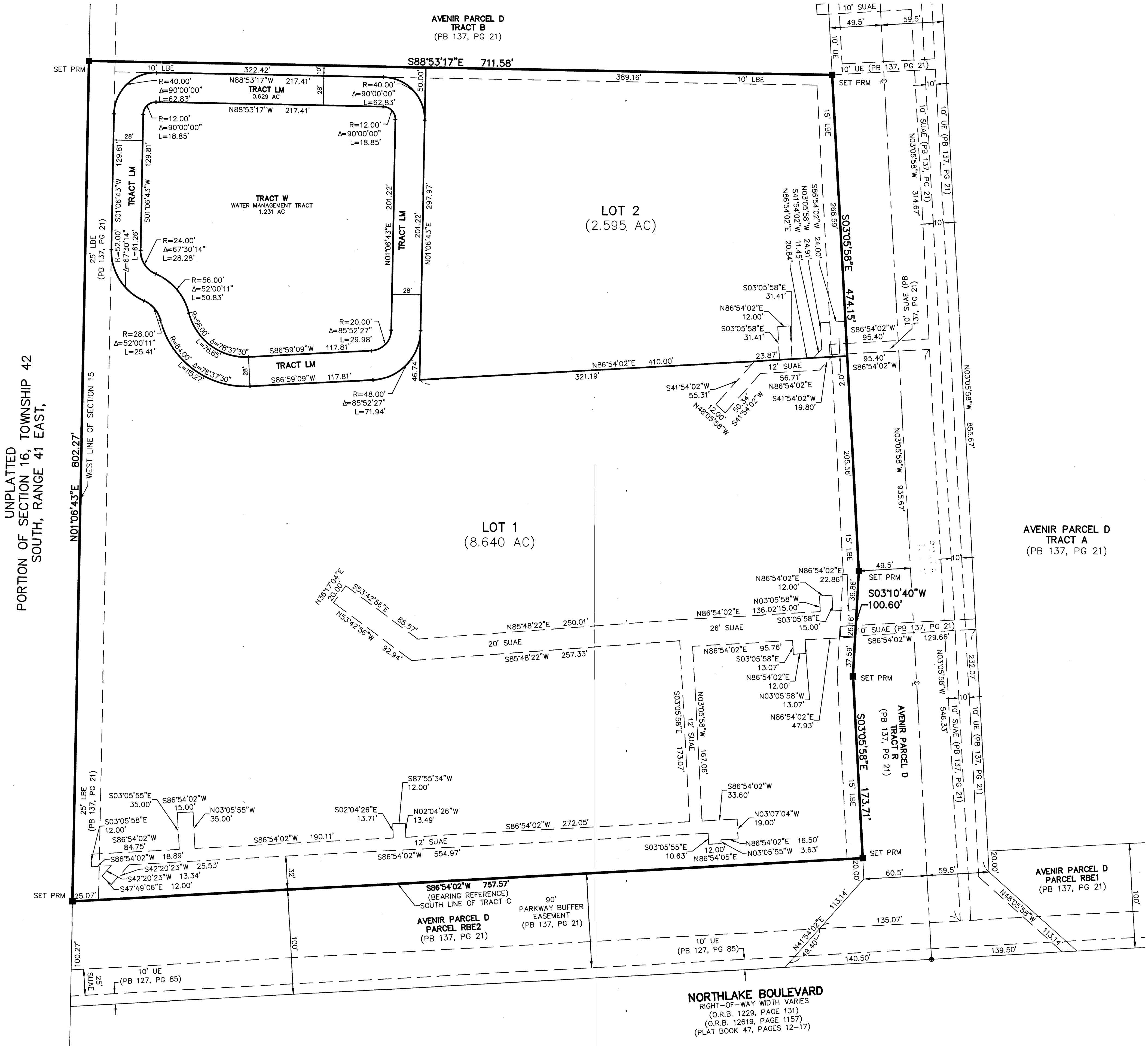
SHEET 2 OF 2

PARCEL TABULAR DATA:

TABULAR DATA	ACRES
LOT 1	8.640
LOT 2	2.595
TRACT W	1.231
TRACT LM	0.629
TOTAL AREA THIS PLAT	13.095



- LEGEND/ABBREVIATIONS:**
- ℄ - CENTERLINE
 - Δ - DELTA (CENTRAL ANGLE)
 - AC - ACRES
 - CB - CHORD BEARING
 - CD - CHORD DISTANCE
 - DE - DRAINAGE EASEMENT
 - L - ARC LENGTH
 - LB - LICENSED BUSINESS
 - LBE - LANDSCAPE BUFFER EASEMENT
 - LSE - LIFT STATION EASEMENT
 - O.R.B. - OFFICIAL RECORD BOOK
 - PB - PLAT BOOK
 - PG - PAGE
 - R - RADIUS
 - (R) - INDICATES RADIAL LINE
 - (RB) - RADIAL BEARING
 - RBE - ROADWAY BUFFER EASEMENT
 - SUAEE - SEACOAST UTILITY AUTHORITY ACCESS EASEMENT
 - SUAU - SEACOAST UTILITY AUTHORITY EASEMENT
 - UE - UTILITY EASEMENT
 - PRM - DENOTES PERMANENT REFERENCE MONUMENT
5/8" IRON ROD WITH CAP STAMPED
'C&W' PRM LB 3591"
 - - DENOTES PERMANENT CONTROL POINT



UNPLATTED
PORTION OF SECTION 16, TOWNSHIP 42
SOUTH, RANGE 41 EAST,

NORHLAKE BOULEVARD
RIGHT-OF-WAY WIDTH VARIES
(O.R.B. 1229, PAGE 131)
(O.R.B. 12619, PAGE 1157)
(PLAT BOOK 47, PAGES 12-17)